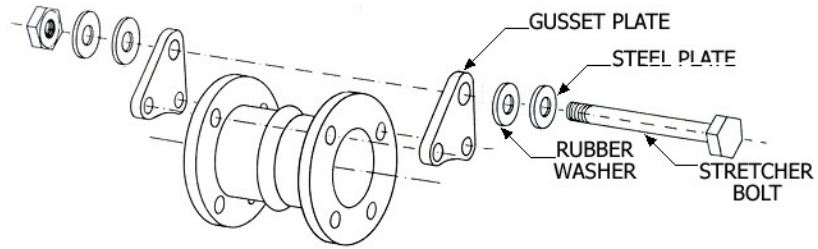


MATERIALS:

- RODS: Steel
- PLATES: Steel
- WASHERS: Steel
- NUTS: Steel



| QTY. | PART No. | SIZE (in.) | GUSSET PLATE THICKNESS (in.) | ROD DIAMETER (in.) | W/P (psi) | |
|------|-----------|------------|------------------------------|--------------------|-----------|--------|
| | | | | | 2-RODS | 3-RODS |
| | SECU-150 | 1-1/2 | 1/2 | 5/8 | 200 | - |
| | SECU-200 | 2 | 1/2 | 5/8 | 200 | - |
| | SECU-250 | 2-1/2 | 1/2 | 5/8 | 200 | - |
| | SECU-300 | 3 | 1/2 | 5/8 | 200 | - |
| | SECU-400 | 4 | 1/2 | 5/8 | 200 | - |
| | SECU-500 | 5 | 1/2 | 5/8 | 140 | - |
| | SECU-600 | 6 | 1/2 | 5/8 | 140 | 200 |
| | SECU-800 | 8 | 1/2 | 3/4 | 140 | 190 |
| | SECU-1000 | 10 | 3/4 | 7/8 | 140 | 190 |
| | SECU-1200 | 12 | 3/4 | 1 | 140 | 190 |
| | SECU-1400 | 14 | 3/4 | 1 | 85 | 130 |
| | SECU-1600 | 16 | 3/4 | 1 | 65 | 110 |
| | SECU-1800 | 18 | 3/4 | 1 | 65 | 110 |
| | SECU-2000 | 20 | 3/4 | 1 | 65 | 110 |
| | SECU-2400 | 24 | 3/4 | 1 | 65 | 100 |

CUSTOMER _____
 PROJECT _____
 ENGINEER _____
 ARCHITECT _____
 PRO./PO No. _____



SOUTHEASTERN HOSE, INC.
 Bremen, GA 30110

**CONTROL UNIT
 SUBMITTAL DATA**

DESCRIPTION: